



# **PARTNERSHIP FORUM & STEERING COMMITTEE MEETING**

## **THE INTEGRATE JOINT ACTION**

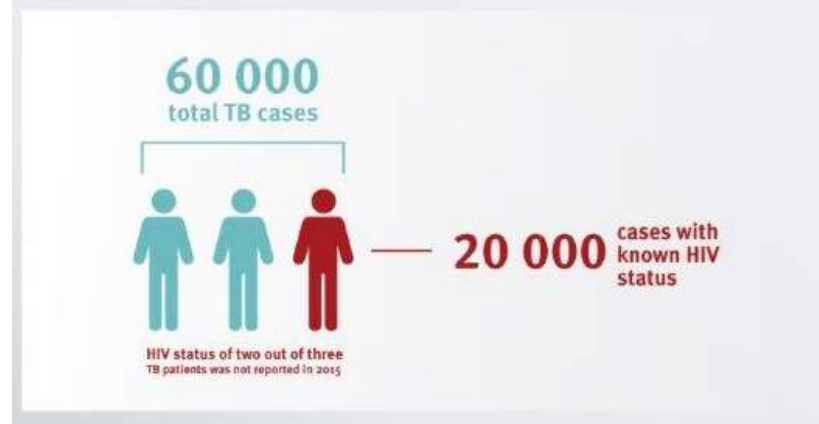
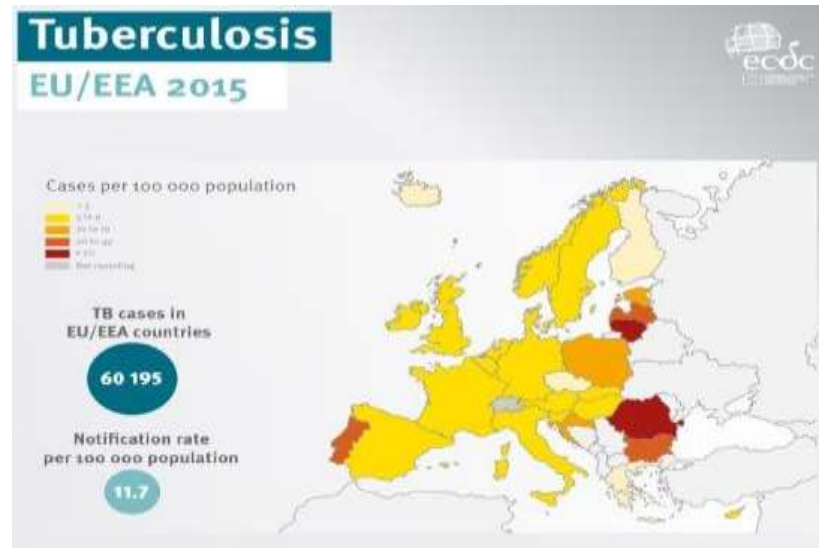
**Vytenis Andriukaitis**  
**Commissioner, DG SANTE**  
**Brussels 20 September 2017**

# Launch of INTEGRATE

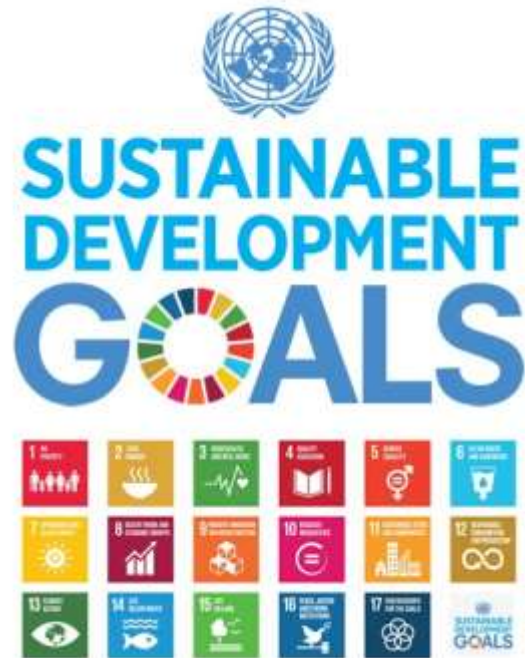
**1 in 7** people living with **HIV** in the EU/EEA do **not know** they are infected



Because it's best to know: find a testing centre near you all across Europe. Check [bit.ly/ECDC HIV testing](https://bit.ly/ECDC HIV testing)



# SDG goal 3.3.



Strasbourg, 22.11.2016  
COM(2016) 739 final

COMMUNICATION FROM THE COMMISSION TO THE EUROPEAN  
PARLIAMENT, THE COUNCIL, THE EUROPEAN ECONOMIC AND SOCIAL  
COMMITTEE AND THE COMMITTEE OF THE REGIONS

Next steps for a sustainable European future

European action for sustainability

{SWD(2016) 390 final}





European Commission

# OptTEST and EURO HIV EDAT

Funded by the

Main Partner

Associated Partners

**EURO HIV EDAT**

EURO HIV EDAT Project

Operational knowledge to improve HIV early diagnosis and treatment among vulnerable groups in Europe

Co-funding from the Consumers, Health and Food Executive Agency (CHAFA) under the EU Public Health Programme for the period April 2014-September 2017 (Grant Agreement N°20131101).



OptTEST PARTNERS

### RESULTS

Of 125,665 adults diagnosed from 2010-2014, 3,794 were diagnosed previously, 769 were previously in HIV care and 810 died within three months of diagnosis. A further 50,067 people had no CD4 data, 4,203 had incomplete CD4 or diagnosis dates (year only) and 5,863 had a CD4 count reported but no date (Figure 1).

**Figure 1: Inclusion/exclusion criteria applied to calculate linkage to care**

**Figure 2: Prompt linkage to HIV care following diagnosis: Europe, 2010-2014**

**Figure 3: Multivariable analysis of factors associated with delayed linkage to care in Europe**

Among the 60,630 people included in these analyses, linkage to HIV care within 3 months of diagnosis was 95.5%. Prompt linkage by demographics and diagnosis characteristics can be seen in Figure 2.

In multivariable analysis, delayed linkage to care was associated with: being infected by injecting drug use or heterosexual transmission, being diagnosed in Central or Eastern Europe and having a first CD4 count >200 cells/mm<sup>3</sup> (Figure 3).

Older age at diagnosis and being diagnosed after 2011 were associated with faster linkage to care. Sex and region of birth were not associated with linkage delays (Figure 3).

# Joint Action INTEGRATE



# Integrate

Joint Action on integrating prevention, testing and linkage to care strategies across HIV, viral hepatitis, TB and STIs in Europe





European  
Commission

**Thank you!**