

Early detection and treatment of TB in Europe

May 2016 – May 2019

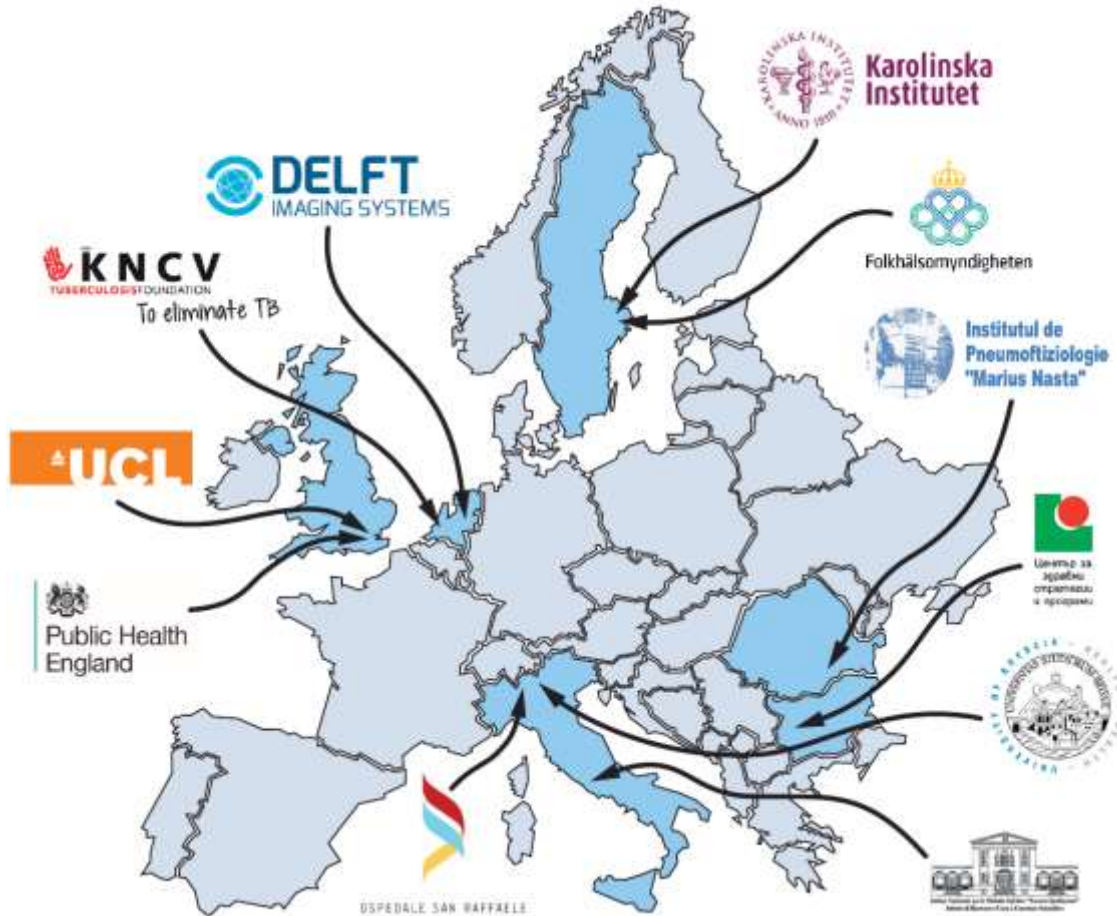
**Presentation at the launch of INTEGRATE Joint Action,
Brussels, Belgium
September 19th 2017**

Gerard de Vries, MD MSc PhD
Consultant KNCV Tuberculosis Foundation
Coordinator TB Control The Netherlands, RIVM-CIb
gerard.devries@kncvtbc.org

Outline

1. Background and context
2. Objectives
3. Methods
4. Work package 4 (outreach activities in Eastern Europe)
5. Expected outcomes
6. Tools planned

The E-DETECT TB consortium



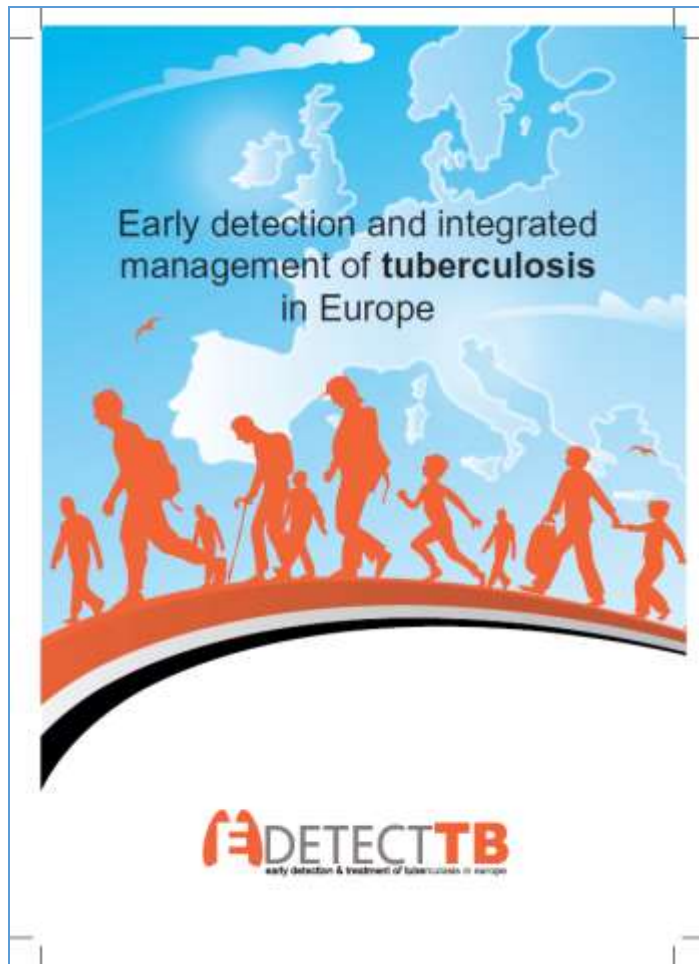
University College London (London, United Kingdom)
 Public Health England (London, United Kingdom)
 Delft Imaging Systems (Veenendaal, The Netherlands)
 Public Health Agency of Sweden (Stockholm, Sweden)
 KNCV Tuberculosis Foundation (The Hague, The Netherlands)
 Marius Nasta Institute of Pneumology (Bucharest, Romania)
 Tsentar Za Zdravni Strategiyi i Programi (Sofia, Bulgaria)
 National Institute for Infectious Diseases (Rome, Italy)
 Karolinska Institute (Stockholm, Sweden)
 Ospedale San Raffaele (Milan, Italy)
 University of Brescia (Brescia, Italy)



In collaboration with the 'Find & Treat' programme

FIND & TREAT

What is E-DETECT TB about?



“A practical programme of translational research”

It brings partners together, share their experiences and exploit new technologies and advances in knowledge to TB control.

Background TB in EU/EEA

1. High burden 60,195 cases reported 30 EU/EEA countries in 2016
 - Slow decline - 3.8% per year in the last five years
 - 4.1% multidrug resistant (MDR) TB
 - Romania accounted for 25% of all cases
2. Vulnerable groups at risk for TB
 - Migrants
 - Prisoners
 - People using illicit drugs
 - Homeless people
 - People living with HIV

Objectives

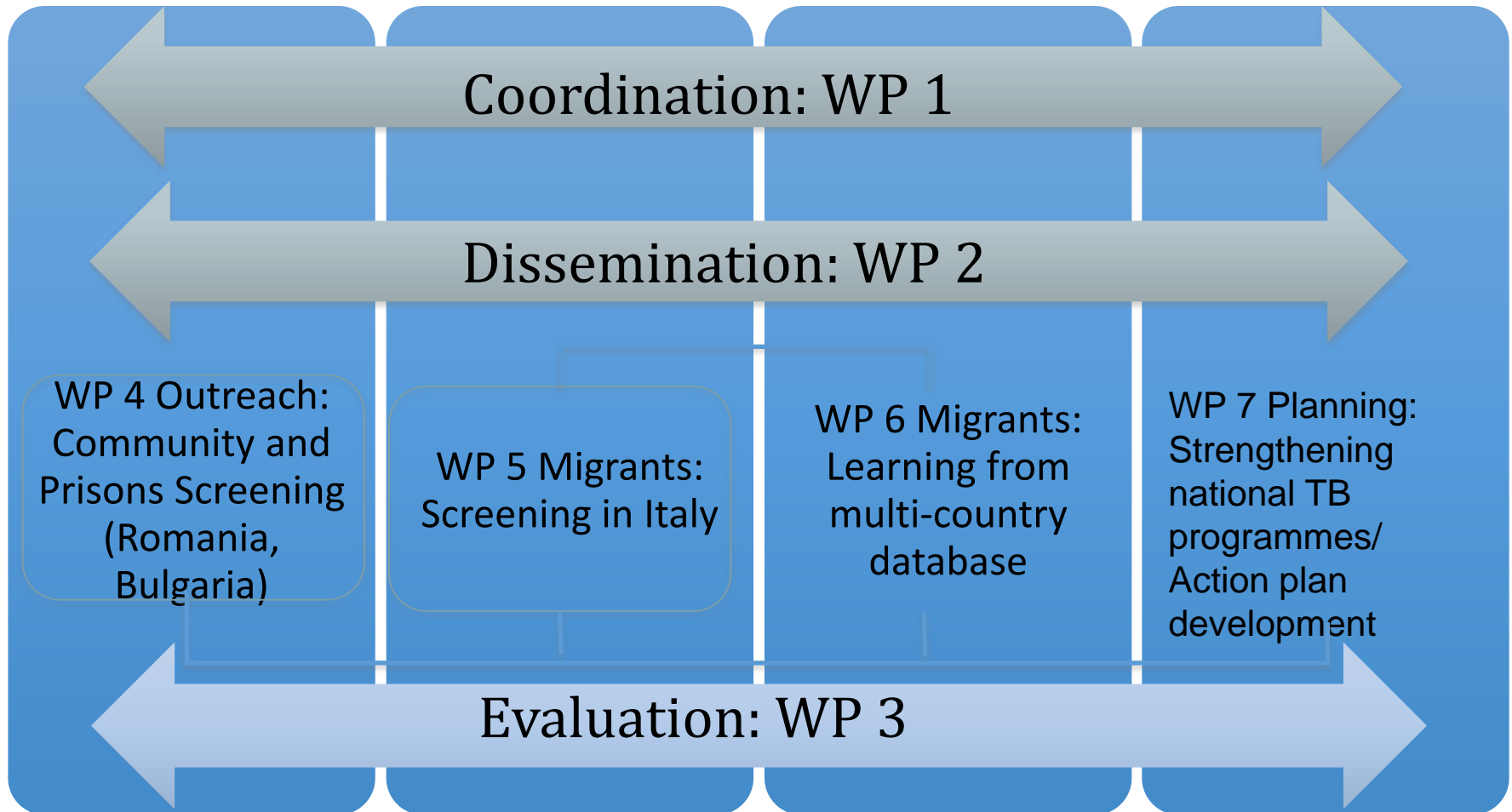
1. To ensure **early diagnosis** in vulnerable populations- defined as **homeless individuals, Roma, those with a history of drug use within the community, and prisoners-** in two high incidence European countries (Romania and Bulgaria). (WP4)
2. To strengthen **care integration using an outreach strategy within the same vulnerable populations in Romania.** (WP4)

Objectives

3. To evaluate approaches for **migrant TB detection** and improve European **cross-border management** by:
 - a) **early detection and care integration** in individuals arriving via the Mediterranean sea in Italy using innovative molecular testing at **immigration reception centres** and novel latent TB tests. (WP5)
 - b) ensuring **cross-border** transfer of information and referral of patients. (WP5)
 - c) collating, analysing and evaluating multi-country data on TB and LTBI screening in **migrants** to low-incidence countries to inform effective strategies. (WP6)

4. To support the development of **action plans** in Member States by adapting best practice approaches. (WP7)

Methods: Work packages



Work package 4

- **Project in Romania (and pilot in Bulgaria).** Note: previous experience in Rotterdam and London (Find & Treat project)
- **Screening with a mobile van/unit**
 - with digital x-ray and computer automated reading (CAD4TB)
 - and molecular tests (Xpert MTB/RIF)



Work package 4 – Mobile van



Work package 4 – Training

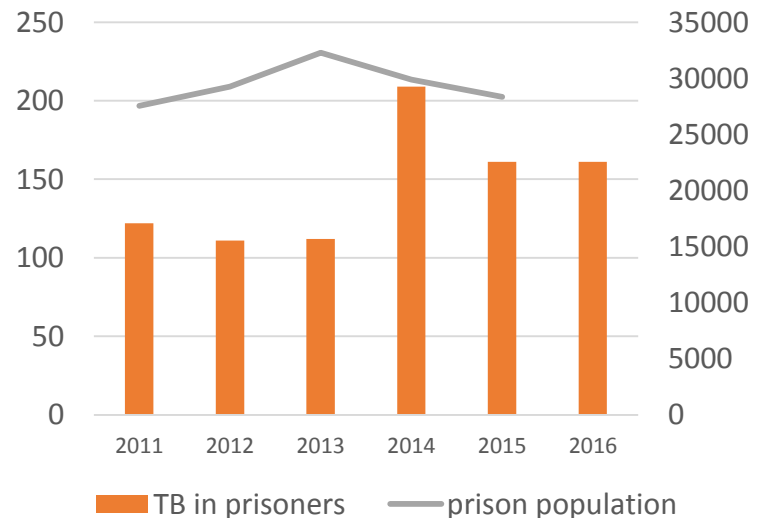
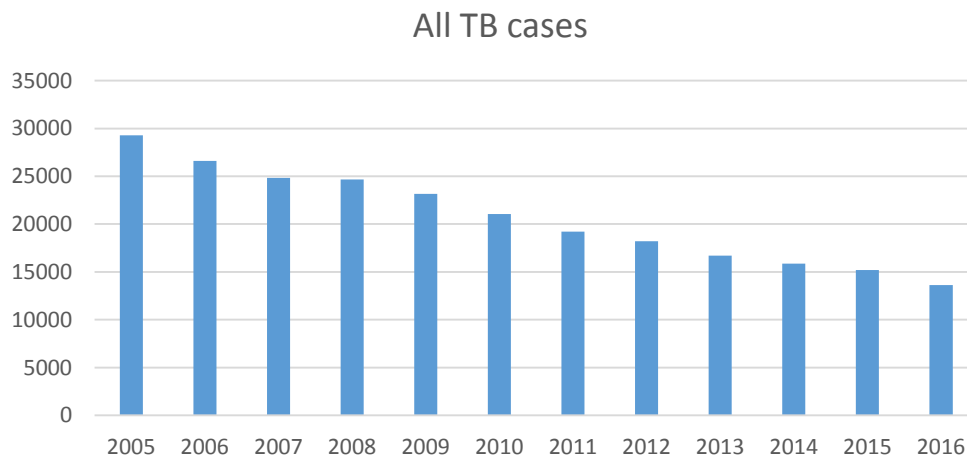
- Pulmonologists
May 2017



- Field visit
(London)
September 2017

Work package 4: Target populations

- Prisoners (those with TB: 2% die; 4% default treatment)
- People using illicit drugs (those with TB: 16% die; 20% default treatment; 86% is HIV co-infected)
- Homeless people (those with TB: 20% die; 24% default treatment)
- Roma



Work package 4: Integrated care

- **One-stop ‘shop’**
 - Accompanied referral (with peer support)
 - Treatment by the National TB Programme
 - Treatment support (DOT - VOT)
 - Psychosocial support
 - Housing
 - Addiction
 - Mental health
 - Destitution
 - Criminal justice
 - Collaboration with partners

Work package 4: Collaboration

- **Collaboration**

- with healthcare and other providers (Prison authorities ANP, ARAS, Caroussel, Save the Children, etc.)
- with communities (Roma population)
- with peers

- **Opportunities for integrated testing and care coordination (move from Mobile X-ray Unit (MXU) to Mobile Health Unit (MHU))**

- Blood-born viruses (HIV/Hepatitis)
- Addiction → Recovery

Expected outcome

WP4: Outreach activity in Romania and Bulgaria

- Detection of active TB using MXU in Romania and Bulgaria
- Treatment of detected patients in Romania and Bulgaria

WP5: Implement and evaluate migrant TB detection in Italy

- Number of latent and active TB cases detected in migrants in Italy
- Linkage to care among detected migrants in Italy

WP6: Creating a database listing active and latent TB cases

- Multi-country data platforms for latent TB established and analysed

WP7: Strengthening national TB programmes

- A TB strategy prioritisation, action and support plan developed

Tools planned

- **Questionnaires**

- WP4: mobile screening data, supported referral and clinical outcome and WP5: latent and active TB

- **Diagnostics**

- ULTRA (test), OMNI (portable platform), QFT plus, Teleradiology + CAD4TB

- **Databases**

- WP4: digital x-ray, screening data, clinical data, microbiology results, outcome data
- WP5 & 6: Latent TB screening database, Active TB screening database

- **Trainings**

- WP4: MXU training, WP5: screening training, WP2: overall dissemination training package

- **Reports and Survey**

- Interim and final reports, evaluation report (including cost-effectiveness), country specific reports, peer reviewed papers from each WP and survey in WP7

Thank you for listening!



UNIVERSITÀ DEGLI STUDI DI BRESCIA

